

# where the mountain meets the moon

**April 11 – May 11**

Relaxed performance: Saturday, 5/3 at 10 am

 ASL/Audio Description: 5/9, 5/11



Art by Grace Lin



**BEST  
CHILDREN'S  
HOSPITALS**

**U.S. News**  
& WORLD REPORT  
**HONOR ROLL**  
2012-13



**Boston Children's Hospital  
Community of Care is there –  
no matter where it hurts.**

Whether for a simple treatment or a complex procedure, you want the best care for your child. You want Boston Children's Hospital Community of Care. Our Community of Care includes satellite locations, affiliated hospitals and over 400 pediatricians across the state. To learn more, visit [bostonchildrens.org/until](http://bostonchildrens.org/until)



**Boston  
Children's  
Hospital**

Until every child is well™

BEVERLY | BOSTON | BROCKTON | LEXINGTON | MANCHESTER, NH | METHUEN  
NORWOOD | PEABODY | WALTHAM | WEYMOUTH | WINCHESTER

April/May 2014

Dear Theatre-goer,

Welcome to the final production of Wheelock Family Theatre's 33rd season. We are thrilled that Grace Lin, who wrote the Newbery Honor book *Where the Mountain Meets the Moon*, has joined us on our journey of producing the stage adaptation of her work. Her talent, creativity, and love of storytelling has touched the lives of the over 75 actors in the show and our dedicated production team and crew. Of this play, director Jane Staab writes:

Stories nurture us. Human beings need stories. All of us love to listen to and tell stories—whether true stories from our own lives, imagined tales to illustrate a moral lesson, or made-up stories for entertainment. Grace Lin's imaginative adventure of Minli's search for a better fortune for her family encompasses all three. In telling this tale, an ancient culture is revisited, a moral lesson is taught, and we are all entertained. Stories enrich our lives, fill us with wonder, and help us to understand others. I hope this beautiful story—*Where the Mountain Meets the Moon*—will touch you, teach you, and move you as it has all of us involved in Minli's journey.

Jane Staab, who has inspired generations of theatre artists and theatre audiences, is embarking on her own journey. After her more than thirty-year tenure at the helm of Wheelock Family Theatre, Jane is retiring this summer. Her steadfast belief in the power of theatre to transform lives informs every aspect of her work, whether she is acting, directing, casting a show, composing, writing, teaching, or coaching. And Jane's passion for what she has made her life's work—theatre in all its glorious (and sometimes inglorious) variety—shines brightly through whatever she undertakes. Her strong artistic vision, her vast experience in all aspects of the theatre, and her unwavering dedication to social justice are without equal. It is hard to imagine WFT without Jane's dry wit and high standards behind the scenes, in rehearsals, and during performances. We hope that we can build on her successes. We know that she will continue to be a valued friend and advisor to the company she helped to create. Congratulations, Jane, we will miss you!

As for our thousands of loyal friends, we look forward to seeing you in our classes, onstage, behind the scenes, and in the audience for what promises to be a thrilling 2014-2015 season of transformative productions.

Best wishes,

Wendy Lement, *Producer*

Shelley Bolman, *Assistant Producer*

# puppet

SHOWPLACE  
THEATRE

## NEW ENGLAND'S PUPPET THEATRE

PERFORMANCES FOR ALL AGES



(617) 731-6400 [www.puppetshowplace.org](http://www.puppetshowplace.org)  
32 Station St. Brookline, MA 02445

WHEELOCK  
FAMILY  
THEATRE

2014-2015  
SEASON

## ALICE

a new coming-of-age musical adaptation  
of *Alice's Adventures in Wonderland*

October 17-November 16, 2014

## PINOCCHIO

an original adaptation of Collodi's classic tale, set in Japan  
and influenced by traditional and contemporary art forms

January 30-February 22, 2015

## The Taste of Sunrise

the second play in Susan Zeder's acclaimed Ware Trilogy,  
illuminates the struggles of a Deaf boy during the Depression  
Produced in collaboration with Emerson Stage & Underground Railway Theatre

March 13-March 22, 2015

## SHREK the MUSICAL

the Broadway smash about a reluctant ogre hero  
based on the irreverent book by William Steig

April 17-May 24, 2015



**Christa Ardito (Monkey)** was born in Hanoi and now lives in Melrose with her Mom and 3 pets. She has enjoyed going to theatre, including WFT, since she was a toddler and has been taking acting lessons since she was 5. She is thrilled to be making her debut onstage at WFT.

**Leyna Blume (Monkey)** is excited to perform in her first WFT main stage production. Other credits include Zoe in *The Prodigal Clown* and the title role in *Snow White*. Leyna is a 3rd grader at Mitchell School in Needham. She loves spending time with her friends and family.

**Georgia Branger-Klein (Monkey)** is excited to be returning to WFT, which feels like a second home. She has performed here in *The Little Mermaid*, *Aladdin*, *The Wizard of Oz*, and *Pippi Longstocking*. Georgia lives in Charlestown and is in 5th grade at Brimmer and May. Thanks to everyone at WFT—especially Jane—for these amazing experiences!

**Heather Buccini (Pear Vendor/u/s A-Fu)**, a Winthrop 5th grader, is thrilled to return to the WFT stage. Recent credits include Pepper in NSMT's *Annie*; Young Mary/Janie Bailey in *It's a Wonderful Life* and Sara in *Miracle on 34th Street* at Stoneham; Brigitta in Concord Players' *The Sound of Music* (EMACT Award Best Musical); and an Orphan in WFT's *Oliver!* Heather enjoys playing basketball and jumping on her trampoline. She thanks family, friends, and teachers for all their love and support!

**Colette Chien (Cucumber Vendor)** is a freshman at Boston Arts Academy, where she majors in dance. She has been seen previously at WFT in *Lilly's Purple Plastic Purse*, *The Little Mermaid*, and *Aladdin* and in Boston Latin School's *Daniel Webster* and *Hairspray*. Colette has had solo performances at City Year's annual gala event and the new recruitment inaugural event. She is so excited to be part of this production.

**Will Christmann (Soldier Li)**, a freshman at Arlington HS, is thrilled to return to the WFT stage for his 5th production. Previous shows here include *Honk!*, *Aladdin*, *The Wizard of Oz*, and *Pippi Longstocking*. Will has also participated in several WFT summer programs, including the Teen Intensive. He studies tap and ballet with the Cambridge Youth Dance Program, and sings with the high school Madrigals.

**Cecilia Cipullo (Back of Buffalo/Neighbor)**, 14, is thrilled to be back on the WFT stage for the 3rd time. Previously, she appeared here in *The Miracle Worker* and *Oliver!* Other regional credits: *A Little Princess* (Jane) at Fiddlehead and *The Christmas Revels* with Revels Inc. Ceci was recognized with an IRNE nomination (Most Promising Performance by a Child Actor) for her role as "Girl" in the world premiere of *Drawin' on the Walls* last spring at F.U.D.G.E.. Film credits: *Mother* (Daughter), a BU short film, and *Listen* (Elli) with Project Aware. Stars and wishes to the cast, crew, Sarah, Ms. Mellissa, and dragons! Extra hugs to Mom, Dad, and Eddie! For Mana.

**Jordan Clark (Black/Bride/Mother Lion/Ancestor Mother)** is excited to be working with WFT for the first time! Boston credits include *Death of a Salesman* (Miss Forsythe) with Lyric Stage and *She Kills Monsters* (Tilly) and *You for Me for You* (Junhee) with Company One. She also recently filmed *Allston Xmas*, a web series by Jared Vincenti, due to be released later in 2014. Jordan has trained at BU's School of Theatre and holds a BA in Vocal Performance from the University of the Incarnate Word in her hometown of San Antonio, TX.

**Paige Clark (Jade Dragon/Amah/Grandmother Lion)** is proud to be making her WFT debut. Recent area credits include *Arabian Nights* (Nora/Underground Railway, IRNE Award); *Romeo and Juliet*, *Two Gentlemen of Verona*, and *Troilus and Cressida* (Actors' Shakespeare); *The Kite Runner* (New Rep); and *She Kills Monsters* (Company One). Paige has taught at Riverside, Charlestown Working, and BU, and is currently teaching theatre to elementary school students at the Edison in Brighton. Originally from San Antonio, TX, she misses the warm weather and Convergent, of which she is a founding artist. Paige holds a BFA from BU and has studied at the London Academy of Music and Dramatic Arts. Lots of love to husband, Dave!

**Laurel Conrad (Choreographer)** is honored to be returning for her 11th year and 10th season at WFT—where she has had the fortune to choreograph all of WFT's musicals and, occasionally, to perform. Her work here has earned her two IRNE Awards for Best Choreography for *Seussical* and *Will Rogers Follies*. Love to Jane and Sue to whom she is very grateful for the incredible chance to work with an amazing theatre company and wonderful people, creating a second family for her. Also, much love to Molly, Nyssa, and the love of her life, Mario, for their support and encouragement. xoxo

**Karina Cowperthwaite (Eggplant Vendor)**, a 7th grader at Noble and Greenough, is very excited to be returning to the WFT stage, where she was seen last year in *Pippi Longstocking*. Her passion for the stage began with dance and she has performed in several classical ballets, including the *Nutcracker* for 4 years at Walnut Hill. Previously, Karina played Louise in *Carousel* and the Heart in *Epic Fail* at Dover Sherborn MS. Credits include a Munchkin and Jitterbug in *The Wizard of Oz* at Open Fields and *Heidi* at Natick Center for the Arts. She enjoys singing, soccer, piano, and skiing.

**Alexander Cox (Soldier Li)** is thrilled to return to the WFT stage, where he was last seen as one of Fagin's kids in *Oliver!* Other credits include *Schoolhouse Rock Live!* (BCT), *Urinetown* (South Shore School of Theatre), and *Children of Eden* (Massasoit). He is a 9th grader in the Advanced Program at North Quincy HS, has a 2nd-degree black belt in Tae Kwon Do, and has played viola for 7 years. Alex loves animals and hopes to go into the field of animal behavior. Thanks to Jane, the production team, and the cast for this wonderful opportunity.

**Stephanie Coyle (King's Page)**, a Brookline 10th grader, is excited to be part of this production. Recent credits include *She Kills Monsters* and *Beauty and the Beast* (Cogsworth). In addition to acting, Stephanie enjoys Broadway theatre, singing, and spending time with her friends. Thanks to Mom, Dad, sister Dani, and friends for their love and support.

**Jackson Daley (Monkey)** is a 3rd grader at Lawrence School in Brookline. He has enjoyed taking classes at WFT. Credits include *The Little Mermaid*, *Where's My Cape*, and *Birds of a Feather* (Artbarn). Jackson likes to sing, dance, and draw.

**Kate Davidson (Monkey)** is a 3rd grader at Bates Elementary in Wellesley. She enjoys performing in dance and school theatre productions and is happy to be making her WFT debut. Kate is the older sister of Liv and Graham and the loving owner of Casey, her Cockapoo.

**Caroline H. Davis (Cub Lion)**, a 6th grader at Lincoln School, is a hockey fanatic who plays goalie for the Brookline Girls U14 team. She also plays piano and trumpet, sings in VOICES Boston, and studies Mandarin Chinese. After fighting Bilbo as a spider in *The Hobbit* last fall, Caroline is excited to return to WFT. Thanks to Jane for her continued encouragement, and to Mom, Mei, and Snowy for their support.

**Corneilia Pearl Davis (Monkey)** is a 4th grader at the Holmes School in Dorchester. A member of 2 choirs and a step group, she is also active with CityLife Via Urbana in JP, where she volunteers to read, speak, or sing in the fight for justice. Corneilia aspires to be a singer, fashion designer, author, and illustrator.

**Mei E. Davis (Monkey)** born in Huazhou, China, is thrilled to be making her WFT debut. She is a 3rd grader at Lincoln School in Brookline. In her spare time, she plays ice hockey and violin, and she is a member of VOICES Boston. Thanks to Mom, Caroline, and Snowy for their support, and to Jane for this opportunity!

**Lila Salant DeAvila (Monkey)** loves crafts, sewing, horseback riding, and swimming. She is in 2nd grade at Countryside Elementary School.

**Dewey Dellay (Composer/Sound Designer)** has worked Off Broadway on *Duet* (Greenwich Street) and in London's West End on *The Countess* (Criterion). His work regionally and in Boston includes *Photograph 51* (Nora; IRNE nomination, Best Sound Design); *Road to St. Ives* (Gloucester Stage); and *Fully Committed* (IRNE nomination, Best Sound Design). Dewey won an Elliot Norton Award for Outstanding Design for his music and design on *The Women* (SpeakEasy) and *9 Parts of Desire* and *Miss Witherspoon* (Lyric Stage). He was also recognized with an IRNE for Best Sound Design for *Five by Tenn* (SpeakEasy) and received IRNE nominations for *History Boys* (SpeakEasy), *Mystery of Irma Vep* (Lyric Stage), and *Saint Joan* (WFT). He recently composed for *Death of a Salesman* at Lyric Stage and *The Whipping Man* at New Rep. His TV credits include music for the Emmy-nominated National Geographic's *China's Mystery Mummies* and Discovery Channel's *Miami Jail*. Dewey is presently composing music for the TV show *Our America* with Lisa Ling for the Oprah Winfrey Network.

**Adobuere Ebiama (Jade Dragon/Amah/Grandmother Lion)** is very excited to be performing with WFT for the first time. Her recent stage credits include *The Black-Jew Dialogues* with Dialogues on Diversity, *Dreaming Again* with the NH Theatre Project, and the NE premiere of *She Kills Monsters* by Qui Nguyen with Company One. Adobuere has worked with Boston Playwrights', Boston Actors, Raw Fruit, and Nollywood America to name a few. In 2011 she landed a role in the Nollywood film *Unwanted Guest*, which premiered in movie theatres in Lagos, Nigeria. She has since been involved in film and national TV commercials.

**Jackson Elwell (Front of Buffalo/Small Cousin)** is in the 6th grade at the Irving School in Roslindale. He is very happy to be returning to the WFT stage where he made his debut, as an orphan, in last season's *Oliver!* Thanks to the WFT community for this wonderful opportunity, and to his family, friends, and teachers for all of their love and support. A special thank you goes out to his younger brother, Iain, for being the best brother ever.

(continued on page 6)

WHO's WHO (continued from page 5)

**Emma Gershberg (Monkey)** is super excited to be making her WFT debut after having taken acting classes here. A 4th grader, her favorite classes include writing, music, and art. She has been a member of the school's choir since pre-K. Outside of school Emma enjoys gymnastics, dance, and singing lessons.

**Morgan Grace (Monkey)**, a 2nd grader at Pierce School in Brookline, is excited to be back at WFT. Credits include 2 WFT mini-musicals and *Dance Around the World* (Uptown Dance). Thanks to the cast, crew, and director Jane Staab for guidance and friendship. Morgan dedicates this performance to her Mom and Dad.

**Sol Gutierrez-Lara (Monkey)** is excited to be back at WFT, after making her debut in *The Hobbit*. A 10-year-old home-schooler, she has played the cello since she was 4 years old. When she grows up, she wants to be an astronomer. Sol is grateful to be a part of this cast and is having a great time.

**Grace Hannibal (Cucumber Vendor)** made her stage debut as an Egyptian court member in *Mutemwiya* when she was in 5th grade. A 9th grader at Brookline HS, she plays violin and enjoys geometry and every science class she has ever taken. She also loves sculpting and drawing comic strips about school. Grace was born in China and came to the US as an infant. She has taught her pet black cat, Tennant, to sit on command before he eats.

**Zayna B. Hopkins (Monkey)** is in the 3rd grade at Mission Hill School. Her favorite activity is climbing trees and she loves monkeys! Zanya appeared as a Spider/Hobbit in *The Hobbit* and has taken many, many classes at WFT - she can't wait to take even more! Big thanks to her sister Nadia, her parents, and her director Jane.

**Lily An Huynh (Monkey)**, a 2nd grader at the Murphy School in Dorchester, is excited to be making her WFT debut. She loves spending every school vacation here taking classes. Lily An is a member of City of Boston Singers and the Monster Swimming Team. She thanks her WFT teachers for their patience and guidance.

**Elbert Joseph (Pearl/Servant Wang/Green Tiger/Peach Vendor)** is overjoyed to be part of this diverse and talented cast. He knew he wanted to become an actor when he saw his first show here with his classmates, and he has been acting ever since. Last seen here as the Horse in *Pippi Longstocking*, his other credits include Pink Lady Slipper in *The Lily's Revenge* (ART) and numerous roles in *Arabian Nights* (Central Square). EJ's credits as interpreter and ASL coach include *Porgy and Bess* (ART), *Wicked* and *Billy Elliot* (Opera House), *Flashdance* (Colonial), and *Mountaintop* (Central Square). This is EJ's 19th production at WFT, and he is darn proud to be part of the WFT family! Big thanks to Jane Staab for helping him to spread his wings and for the wonderful magic she gave him. He will always treasure it.

**Neel Anand Kumar (Monkey)**, a 4th grader at Kingsley Montessori, is making his WFT debut! He lives with his mother, uncle, aunt, and little cousin here in Boston; the rest of his family lives in India and NJ. Neel plays the electric guitar and loves to read. His dream is to be an engineer and make robots.

**Matthew T. Lazure (Set Designer)** has designed sets for Gloucester Stage (*Carnival*); KidStage at the Boston Children's Museum (*It's All in the Cycle*); Gold Dust Orphans (*Medea, All About Christmas Eve, and Peter Pansy*); Provincetown Theatre (*Santaland Diaries*); and Pee Wee Players of Provincetown (*The Absolutely Amazing Adventures of Heidi and Alice in Wonderland, A Musical Curiosity*). His set designs for WFT include *The Hobbit, Pippi Longstocking, Oliver!*, *Anne of Green Gables, The Phantom Tollbooth, Honk!*, *Lilly's Purple*

*Plastic Purse, Charlotte's Web, and The Secret Garden* (Ellen Norton nomination). Matthew's costume designs have been seen on the WFT stage in *The Hobbit, Beauty and the Beast, Peter Pan, Saint Joan, and Snow White* (IRNE nomination). MA College of Art graduate, he shows his fine art in Boston, Provincetown, and online at [matthewlazure.com](http://matthewlazure.com).

**Hannah Lewis (Sign Performer)** is a nationally certified interpreter whose interpreting experiences include *George and Martha, Aladdin's Luck, Don Quixote, Genesis Reborn, Home of the Soldier, Trip to the Moon, and Three Musketeers*. She is honored to join the interpreting team at WFT with colleagues Kristin Johnson and Kristina Miranda.

**Marjorie Lusignan (Props Designer)** is glad to return for the 6th season at WFT. After a 25-year career as a technical illustrator, she is now a visual artist who lives, gardens, and makes art in the woods of RI. Props designed for WFT have included a dragon, a robin, a monkey, a 1950s TV camera, and a giant hairspray can. She is always up for a challenge.

**Ava Kathryn Lyons (Monkey)** is thrilled to make her WFT debut. Credits include *Annie, The Wizard of Oz, West Side Story, and The Sound of Music*; she was also a member of the Junior Celtics dance team. Huge thanks to her family and friends for their support and an extra special hug to all of her grandparents! XO

**Sophia A. Mack (Monkey)** has appeared as Molly in *Annie* and as the Bullfrog in *Honk!* (Cabot After School) and *The Nutcracker* with Washington School of Ballet and Boston Ballet. Sophia is also the voice of Dr. Dee Dee Dynamo in a recording of this new science book for children. She enjoys taking classes at WFT.

**Suzannah Marsh (King's Page)** is ecstatic to be making her WFT debut in this fabulous show! Previous credits include: *The Music Man* (Amaryllis), *A Christmas Carol* (Nell Cratchit), *Annie* (Tessie), *The Who's Tommy* (Hawker), and the world premiere of *Paragon Park: The Musical* (young girl). Many, many thanks to her incredible family and friends, and to Jane, Laurel, and the rest of this amazing production team. To Leslie and Aaron: she loves both of you more than words could ever describe.

**Kiran Maypole (Eggplant Vendor)** is delighted to be returning to WFT! After making her debut here on the main stage in *Pippi Longstocking* and touring for 2 years with Story Troupers, she already thinks of WFT as a second home. She can't wait to spend her summer here! Kiran attends Brown MS in Newton. Thanks to her parents for being so supportive. Enjoy the show!

**Penelope Meisel (Monkey)** is a 2nd grader at the Joyce Kilmer School in West Roxbury. She is on the swim team, plays piano and softball, and loves reading, art, and dogs. This is Penelope's WFT debut.

**Melissa Miller (Costume Designer)** is a visual artist whose works most recently appeared in the group show "Sacred Earth...The Artist's View" at the Atelier Decorative and Fine Art Gallery in Greenport, NY. She worked at Metropolitan Museum of Art as a textile conservator and has designed for Light Opera of Manhattan, Harwich Junior and Winter Theatres, and WFT. Her credits here include *Peter Pan, Charlotte's Web, Holes, Lilly's Purple Plastic Purse, Aladdin, The Wizard of Oz, and Pippi Longstocking*. She lives in NYC with her children, Harry and Josie.

**Kristina Miranda (Sign Performer)** is making her WFT debut. She holds an Associate's and a Bachelor's degree in ASL-English interpreting. As a nationally certified practitioner, Kristina currently works as a freelance interpreter throughout MA. Previous performing arts credits include *Tribes* (SpeakEasy) and *Flashdance* (Broadway in Boston), as well

as Pink, Ingrid Michaelson, and Karmin. As an ASL native, Kristina dedicates this show to her parents back in NJ and the Philippines. She is grateful for the cultures, passion, and wisdom they have shared with her. Kristina also thanks the Deaf community members, interpreters, friends, and loved ones who have never stopped encouraging and believing in her.

**Bill Mootos (Magistrate Tiger/King)** is delighted to be returning to WFT, where he has appeared in *A Tale of Two Cities*, *Saint Joan*, *Lord of the Flies*, and *Beanstalk*. Recently he appeared in *Absence* (with Joanna Merlin) and *The Company We Keep* (Boston Playwrights'), *Good People* (Gamm), and *Absurd Person Singular* (Nora). Other credits include productions with New Rep, Sierra Rep, Huntington, Publick, Metropolitan Playhouse NYC, Manhattan Theatre Source, NSMT, Vineyard Playhouse, Boston Theater Marathon, Gloucester Stage, Lyric Stage, Merrimack Rep, Ivoryton Playhouse, Barnstormers, Central Square, SpeakEasy, Hanover, Garage, and many others. Bill's film credits include the NBC-TV pilots *Odyssey* and *The Hatfields & McCoys*, and the films *The Company Men*, *Locked In*, *Hard Luck*, *Siren*, *The Makeover*, and *RIPD*. Bill serves on the National Board of SAG-AFTRA, and is a proud member of Actors' Equity Association and StageSource. Thanks to Jane.

**Julia Most (Monkey)** became interested in acting after attending a WFT Vacation Week Intensive. Since then, she has played an Orphan in *Oliver!* and Jane/Lost Boy in *Peter Pan* with JCC's Showstoppers. Julia enjoys singing, playing piano, or dancing. A 2nd grader at Needham's Mitchell School, she is thrilled to be in this production.

**Grace Napier (Ma)** has been featured in numerous WFT productions, from classic musicals such as *Carousel*, *The King and I*, *The Secret Garden*, *The Music Man*, *Cinderella*, *Fiddler on the Roof*,

*Hello, Dolly!*, *Peter Pan*, and *Anne of Green Gables*, to family plays such as *Little Women*, *Winnie-the-Pooh*, and *Aladdin*. Other professional highlights include a national tour of *The King & I* (with Rudolf Nureyev), the US premiere of *Odessa* (with Jack Dabdoub) at Walnut Street, and Trinity Rep's musical version of *A Christmas Carol* (with Stacy Keach). A graduate of MIT, Grace is a member of Actors' Equity and the faculty of WFT's Education Program. She is proud to have directed WFT's IRNE Award-winning main stage production of *Seussical*, as well as Story Troupers (WFT's elite summer touring program for teens) and its collaborative workshops with the Boston Lyric Opera. Grace's Korean mother journeyed across the world so that Grace could be born with the rich opportunities available in the US. Like her and Ma, Grace has travelled far, but returned to find personal and professional contentment with her own family here at WFT. Much love always to Bill, Christina, Jane, and the extended WFT clan!

**Greg Nash (Production Stage Manager)** is excited to be returning as stage manager! Off-Broadway, he stage-managed Tennessee Williams performing in his play, *Small Craft Warnings*. Regional theatre credits include the Goodman and Long Wharf Theatres. Local credits include *Nora*, *Underground Railway*, Boston Playwrights', Boston Theatre Works, Publick, and, most recently, *Death of a Salesman* at Lyric Stage. He was the production stage manager for New Rep's IRNE and Elliot Norton Award-winning season which included *Waiting for Godot* and *Sweeney Todd*. In addition to stage managing 19 WFT productions, Greg has acted here in many shows, including the first *Alice* in 1981. Love and thanks to Jane, and to Robin and Erin for being such a great team. Greg holds a BFA from BU School of Theatre, and is a proud member of Actors' Equity Association.

(continued on page 8)

At Dexter Southfield School,  
your child sings with joy,  
debates with conviction,  
and plays with intensity...

all while giving her  
full effort every day.

dextersouthfield.org

classicworks

DEXTER SOUTHFIELD

Melding classic college preparation and traditional character development  
for boys and girls PK through Class 12 in Brookline.

## BEST WISHES and CONTINUED SUCCESS

**LILLIAN GONZALEZ,  
CPA, MST, CSEP**

14 Page Terrace, Stoughton, MA 02072  
(781) 344-1040 FAX (781) 344-4449

[www.go-cpas.com](http://www.go-cpas.com)

### CERTIFIED PUBLIC ACCOUNTANTS

- ACCOUNTING • AUDITING
- TAXES • FINANCIAL PLANNING
- RETIREMENT PLANNING
- ESTATE PLANNING

WHO's WHO (continued from page 7)

**Gary Thomas Ng** (*Emissary Chu/Gold Fish Man/Grandfather Lion*) is "over the moon" to be back at WFT and bringing this beautiful story to life. Recent appearances here include last season's *Anne of Green Gables* (Cecil) and *Oliver!*, filling in as Mr. Bumble for 8 performances the last 2 weeks of the show. Other WFT credits include *Annie* (Drake), *Honk!* (Barnacles/Turkey) *Seussical* (Mayor), *Lilly's Purple Plastic Purse* (Baby Julius), *Peter Pan* (Smee), and *Beauty and the Beast* (LeFou). Other favorite credits include *Miss Saigon* (Ogunquit) and *Miss Saigon* (Foothills), where he understudied and performed the role of The Engineer; *Children of Eden* (NSMT); *Sideshow* (Lyric); *Grease!*, *Joseph ... Dreamcoat*, and *Footloose* (Ogunquit); Paul in *A Chorus Line*; Jacob in *La Cage Aux Folles*; and the Far East tour of *Cole Porter's Aladdin*. Gary is also a photographer whose works include production photos for Ogunquit, Gloucester Stage, and WFT.

**Zoë Parkin** (*Monkey*), 8 years old, is proud to return to the WFT stage after her appearance in *Pippi Longstocking*. She also loves taking classes at WFT and has for 2 years. Zoë has 2 pet sea monkeys. She lives in Cambridge, with her best friend 2 floors below. Thanks to her WFT teachers, her family, and her friends for all their support.

**Chip Phillips** (*Old Man of the Moon/Painter Chen/A-Gong*) is delighted to return to WFT, where he has appeared in *Beauty and the Beast*, *The Phantom Tollbooth*, *Anne of Green Gables*, and *A Little Princess*. Back in LA, he performed in *The Full Monty*, *Falsettos*, and *Dirty Rotten Scoundrels*. Off-Broadway, Chip was seen in *Machiavelli* and *Perfect Crime*. Local credits include *I Love You, You're Perfect, Now Change*; *Sleuth*; *She Loves Me*; *The Front Page*; *Lend Me a Tenor*, *Das Barbecü*, and *Bed and Sofa*.

We're proud to support the  
voices of our community.

Bank of America is  
proud to support  
Wheelock Family Theatre  
for its leadership in creating  
a successful forum  
for artistic expression.

Visit us at  
[bankofamerica.com](http://bankofamerica.com)

**Bank of America** 



**GEORGE W. BLAISDELL**  
INSURANCE BROKER

*The Governor's Mansion*  
P.O. Box 644 Hampton Falls, NH 03844

TOLL FREE 800-882-8535



**Alina Potashinsky (Monkey)** is thrilled to return to the WFT stage after appearing as an Orphan in *Oliver!* last season. She enjoys singing with VOICES Boston, dancing at Koltun Ballet Academy, and taking math classes at the Russian School of Mathematics. Thanks to her family and WFT for the opportunity to be part of this great cast!

**Arianna Reith (King's Page/Ancestor Child/Translator for Servant Wang)** is thrilled to be part of the WFT family again, after making her debut here in *Pippi Longstocking* last spring. A 5th grader at Brookline's Baker School, Ari has been passionate about acting since age 5, performing in numerous plays in venues such as ART, Coolidge Corner Theatre, and Maliotis Cultural Center. She can't wait for you to see the show today!

**Nejma Reza (Monkey)**, a 3rd grader at Newton Montessori, is very happy to be returning to WFT, where she made her debut as a town's kid in *Pippi Longstocking*. She has performed at Regis with Joanne Langione's Dance Center and piano recitals with Music Teacher's Collaborative. Nejma enjoys reading, gymnastics, dancing, and travelling.

**Alexander P. Roy (Long/Magistrate Tiger's Son/Father Lion/Ancestor Uncle)** originally from Springfield, NJ, studied Theatre Arts at Roanoke in Salem, VA. An artistic associate with Science Fiction Theatre, he has worked as an actor/director with several local companies. Favorite roles include the Officer (*Good Woman of Setzuan*), Sam (*The Man in the Couch*), Stewart (*Future Boyfriend*), and, most recently, Vin (*Handicapping*). This is far from the first production he's been involved with here, but this is Alex's debut on the WFT main stage. He is so very excited and honored to be performing and assistant directing. A big thanks to Jane Staab for being such an amazing mentor.

**Lexi Ryan (A-Fu)** is honored to be part of this premiere! A sophomore at Advanced Math and Science Academy, she has been seen here previously in *Anne of Green Gables*, *Annie*, *The Little Mermaid*, and *Seussical*. Other credits include *A Christmas Story* (Esther Jane) at New Rep, three seasons of *A Christmas Carol* (Ghost of Christmas Past) at Hanover, and *The Secret Garden* (Mary Lennox) at Turtle Lane. Lexi also performed in a Lyric Stage musical tribute to Tony Award-winning playwright David Henry Hwang. She is the 2009 winner of the TAMY Rising Star Award for her performance as Young Cosette in *Les Misérables*. Lexi thanks Jane for being an amazing mentor and for giving her the opportunity to bring one of her favorite books to the stage!

**Whitney Sandford (Pear Vendor)** is so happy to be back with her WFT family and part of this incredible cast and crew. She previously appeared here in *The Phantom Tollbooth*, *Annie*, and *Charlotte's Web*. Other recent favorites include *The Diary of Anne Frank* (title role) at Roxbury Rep; *Xernona and the Grand Dragon X* (Janie, Gail) at the Strand; *Jane Eyre* (Helen Burns) at Walnut Hill; and *Pirates of Penzance* (Isabel), *Hairspray* (Tammy), and *Urinetown* (Little Sally) with Nobles Theatre Collective. Many, many thanks to Jane for being such a great director, mentor, and friend!

**Grace Theresa Schifilliti (Monkey)** is a 3rd grader at Hillside School in Needham, making her main stage debut. She has seen more than 15 shows at WFT and has been coming to the Theatre since she was 3. Grace can climb like a monkey up almost anything and loves hanging upside down. She also loves waterparks.

**Hanna Schneider (Primary Audio Describer)** worked for many years in many capacities at WFT, and continues to help out whenever she can from her home on Cape Cod. Past credits here include *Pippi Longstocking*, *Aladdin*, *Charlie and the Chocolate Factory*, *Beanstalk*, *Hello, Dolly!*, *Stuart Little*, *The Hobbit*, and *Once Upon a Mattress*. Credits at Woods Hole include

*Boomtown* and *Rocky Horror*. Hanna is a Wheelock College alum, a preschool teacher, and the mother of Ben and Beth.

**Anna Schuliger (Hawthorn Berry Vendor)** is thrilled to be back in her 2nd main stage production at WFT! A junior at Boston Latin, she has been acting ever since 2nd grade. Favorite roles include Alice Sycamore in *You Can't Take It With You* and Tracy Turnblad in *Hairspray* (BLS) and Miranda in *The Tempest* (Footlight Club). Anna has also participated in 2 WFT Teen Performance Intensives under the direction of Fran Weinberg. She thanks her family and friends for their undying support, Jane Staab and all others on the production team for their incredible instruction, and WFT for this opportunity.

**Carrie Ruxin Shao (Back of Buffalo/Neighbor)** is beyond excited to return to the WFT stage, where she previously appeared as a swing in *Anne of Green Gables*. Past credits include Ling in *...It's Superman!* (French Woods), King Triton in *The Little Mermaid Jr.* (TPAC), *Brundibar* and *But the Giraffe* (Underground Railway), and Grandma Tzeitel in *Fiddler on the Roof* (Weston MS). Carrie made her theatrical debut in 6th grade, directing and playing the title role in *Peter Pan*. A freshman at Weston HS, she plays first trumpet in band and was recently accepted to the Eastern Jr. Districts Music Festival. Thanks to Jane for giving her another great opportunity, and to her family (always!).

**Cassie Ruyi Shao (Soldier Ling/Back of Buffalo)** is thrilled to be back at WFT after appearing in last season's *Anne of Green Gables*. Previous credits include *Brundibar* and *But the Giraffe* (Underground Railway), *The Little Mermaid Jr.* (Sebastian) with TPAC, *...It's Superman* (Ling) with French Woods, and *Peter Pan* (Wendy Darling), a play she co-directed with her sister in 6th grade that marked her stage debut. A freshman at Weston HS, Cassie likes playing piano and trumpet, Chinese calligraphy, swimming, traveling, and singing with the Boston Children's Chorus. Huge thanks to Jane, the fabulous cast and crew, Mom, Dad, and Bonnie.

**Julia Smith (Monkey)**, a 3rd grader at Memorial School in Natick, is very excited to be making her debut at WFT! She studies dance at Walnut Hill where she has performed in the *Nutcracker* for the past 2 years. Julia enjoys school and playing with her dog Lucy. She thanks her parents for their support and encouragement.

**Stewart Evan Smith (Dragon)** was last seen on the WFT stage in *The Hobbit*. Recent credits include *She Kills Monsters* (Company One), *To Kill a Mockingbird* (Weston Playhouse), *Cut* (Appollinaire), and *Dwelling* (Open).

**Jane Staab (Director)**, as a founding member of WFT, resident AEA actor, composer, and casting director, has made WFT her home for 33 years. She has directed 34 main stage productions, including *Anne of Green Gables*, *The Phantom Tollbooth*, *Annie*, *Peter Pan*, and *The Sound of Music* and she has performed in over 75. While most proud of her Emily Dickinson in *The Belle of Amherst*, she has recently most enjoyed playing Fagin in *Oliver!* (IRNE nomination), Great Mother in *The Little Mermaid*, Madame Defarge in *A Tale of Two Cities*, and the drunk lady in *Hairspray*. Jane bids a fond farewell to a fabulous place to work, live, and make lifelong friendships. She hopes that all who cross the WFT threshold may have as profoundly worthwhile an experience. Live theatre transforms lives.

**Meili Stanten (Small Cousin/Front of Buffalo)** is excited to make her debut with WFT. She has performed throughout MA and as far away as Disney World during her 4 seasons with Friends of Broadway. Meili studies musical theatre, dance, acting, and singing at the Performing Arts Connection and has performed for many years in productions with Metrowest.

(continued on page 15)

# Where the Mountain Meets the Moon

adapted for the stage by Jeannine Coulombe  
based on the book by Grace Lin

DIRECTOR <b>Jane Staab</b>	SET DESIGNER <b>Matthew T. Lazure</b>	COSTUME DESIGNER <b>Melissa Miller</b>	PROPS DESIGNER <b>Marjorie Lusignan</b>
COMPOSER/SOUND DESIGNER <b>Dewey Dellay</b>	LIGHTING DESIGNER <b>Craig A. Zemsky</b>	CHOREOGRAPHER <b>Laurel Conrad</b>	PUPPETRY COACH <b>Roxanna Myhrum</b>
PRODUCTION STAGE MANAGER <b>Greg Nash*</b>	SIGN PERFORMERS <b>Hannah Lewis, Kristina Miranda</b>		AUDIO DESCRIBER <b>Hanna Schneider</b>

## THE CAST

Minli	<b>Caroline Workman*</b>
Ba	<b>Michael Tow</b>
Ma	<b>Grace Napier*</b>
Dragon	<b>Stewart Evan Smith</b>
Old Man of the Moon/Painter Chen/A-Gong	<b>Chip Phillips*</b>
Magistrate Tiger/King	<b>Bill Mootos*</b>
Emissary Chu/Gold Fish Man/Grandfather Lion	<b>Gary Thomas Ng*</b>
Jade Dragon/Amah/Grandmother Lion	<b>Paige Clark*/Adobuere Ebiama*</b>
A-Fu	<b>Lexi Ryan</b>
Da-Fu	<b>Arthur Wheelock-Wood</b>
Cub Lion	<b>Caroline H. Davis/Christina Xiao</b>
Buffalo Boy	<b>Sebastian Wood</b>
Voice of Gold Fish/Silver Fish	<b>Jane Staab*</b>
Black/Bride/Mother Lion/Ancessor Mother	<b>Jordan Clark</b>
Pearl /Servant Wang/Green Tiger/Peach Vendor	<b>Elbert Joseph</b>
Long /Magistrate Tiger's Son/Father Lion/Ancessor Uncle	<b>Alexander P. Roy</b>
Yellow /Painter's Apprentice/Ancessor Aunt	<b>Kaitee Tredway</b>

## NARRATORS/VILLAGERS

Heather Buccini, Colette Chien, Will Christmann, Cecilia Cipullo, Karina Cowperthwaite, Alexander Cox, Stephanie Coyle, Jackson Elwell, Grace Hannibal, Suzannah Marsh, Kiran Maypole, Arianna Reith, Whitney Sandford, Anna Schuliger, Carrie Ruxin Shao, Cassie Ruyi Shao, Meili Stanten, David Sullivan, Julia Talbot, Alana Tow, Kailey Tse-Harlow, Alexa Wang

## MONKEYS

Christa Ardito, Leyna Blume, Georgia Branger-Klein, Jackson Daley, Kate Davidson, Corneilia Pearl Davis, Mei E. Davis, Lila Salant DeAvila, Emma Gershberg, Morgan Grace, Sol Gutierrez-Lara, Zayna B. Hopkins, Lily An Huynh, Neel Anand Kumar, Ava Kathryn Lyons, Sophia A. Mack, Penelope Meisel, Julia Most, Zoë Parkin, Alina Potashinsky, Nejma Reza, Grace Theresa Schifilliti, Julia Smith, Siena Stanten, Aidan Thielman, Talia Raisner Thompson, Mia A. Tora, Mikayla Tow, Darren Trotman, Jr.

There will be one 15-minute intermission between the acts.

*Where the Mountain Meets the Moon* is presented through special arrangement with Stages Theatre Company, Hopkins, MN, and Grace Lin.

Ask the House Manager for individual sound enhancement devices.

The taking of photographs and use of recording devices is strictly forbidden.

**Please turn off all electronic devices. Please, no eating or drinking in the theatre.**

Open captioning provided in collaboration with c2 (caption coalition) inc, [www.c2net.org](http://www.c2net.org).



\*Member of Actors' Equity Association, the Union of Professional Actors and Stage Managers in the United States. The Wheelock Family Theatre is operating under the terms of a Developing Theatre's Program of Actors' Equity Association. The contract used is a Letter of Agreement.



## Wheelock Family Theatre

### STAFF

Producer	<b>Wendy Lement</b>
Casting Director/Business Manager	<b>Jane Staab</b>
Director of Education	<b>John Bay</b>
Publicity and Marketing Director	<b>Charles G. Baldwin</b>
Assistant Producer/Managing Director, Theatre Espresso	<b>Shelley Bolman</b>
Administrative Director	<b>Kay Arden Elliott</b>
Development Consultant	<b>Janet Bailey</b>
Grantswriter	<b>Robin J. Hanley</b>
Associate Director of Education	<b>Kortney Adams</b>
Audience Engagement Coordinator	<b>Marianne Adams</b>
Inclusion Coordinator/Director of Artistic Sign Language	<b>Kristin Johnson</b>
Box Office Supervisor	<b>Stephen Reinstein</b>
Technical Director	<b>Matthew T. Lazure</b>
Production Manager	<b>Brian Masters</b>
Assistant Technical Director/Master Electrician	<b>Craig A. Zemsky</b>

### PRODUCTION TEAM

First Assistant to the Director/Dramaturg	<b>Alexander Roy</b>
First Assistant to the Stage Manager	<b>Robin D. Liberty</b>
Second Assistant to the Stage Manager	<b>Erin Forgay</b>
Props Mistress	<b>Marjorie Lusignan</b>
Costumer	<b>Lisa Simpson</b>
Assistants to the Costumer	<b>Mina Ha, Sarah Kershaw</b>
Costume Shop Support	<b>Jennie Hudson-Bryant, Karl Jacobs, Adria Katz, Gamalia Pharms, Alessandra Mondolfi, Julia Talbot, Pier Talbot, Jerry Wheelock</b>
Captioning	<b>Jamie Aznive, Kenji Guldner, Linda Le, Miki Matsushita, Valerie See, Hollister Ream, Kayloni Williams</b>
Scenic Carpenters	<b>Kris Kruss, Doughty Leigh, Jerry Wheelock, James Willison, Mac Young</b>
Painters	<b>Joni Liberman, Kaitlin "Magic" Mahon</b>
Electricians	<b>Matthew Breton, Matthew Cost, Jamie Curran, Jeff Maynard, Clara Rhee, Brian Shaw</b>

### EDUCATION PROGRAM FACULTY

Marianne Adams, Katherine Akerley, Esme Allen, Christy Betit, Danny Bolton, Jennifer Buller, Paige Clark, Laurel Conrad, Cori Couture, Olivia D'Ambrosio, Laura DeGiacomo, Andrea Doane, Kelly Dooley, Donna Folan, Ellie Friedland, Jeri Hammond, Angela Harvey, Brenda Huggins, Jeremy Johnson, Kristin Johnson, Lyrallen Kaye, Susan Lombardi-Verticelli, Marjorie Lusignan, Dev Luthra, Angie Jepson Marks, Brett Marks, Yvonne Murphy, Mary-Liz Murray, Grace Napier, John O'Neil, Justin Packard, Beth Peters, Sophie Rich, Samantha Richert, Ilyse Robbins, M. Lynda Robinson, Rebecca Schneebaum, Brynnalee Simmons, Dennis Staroselsky, Jackie Theoharis, Jessica Webb, Fran Weinberg, Alan White

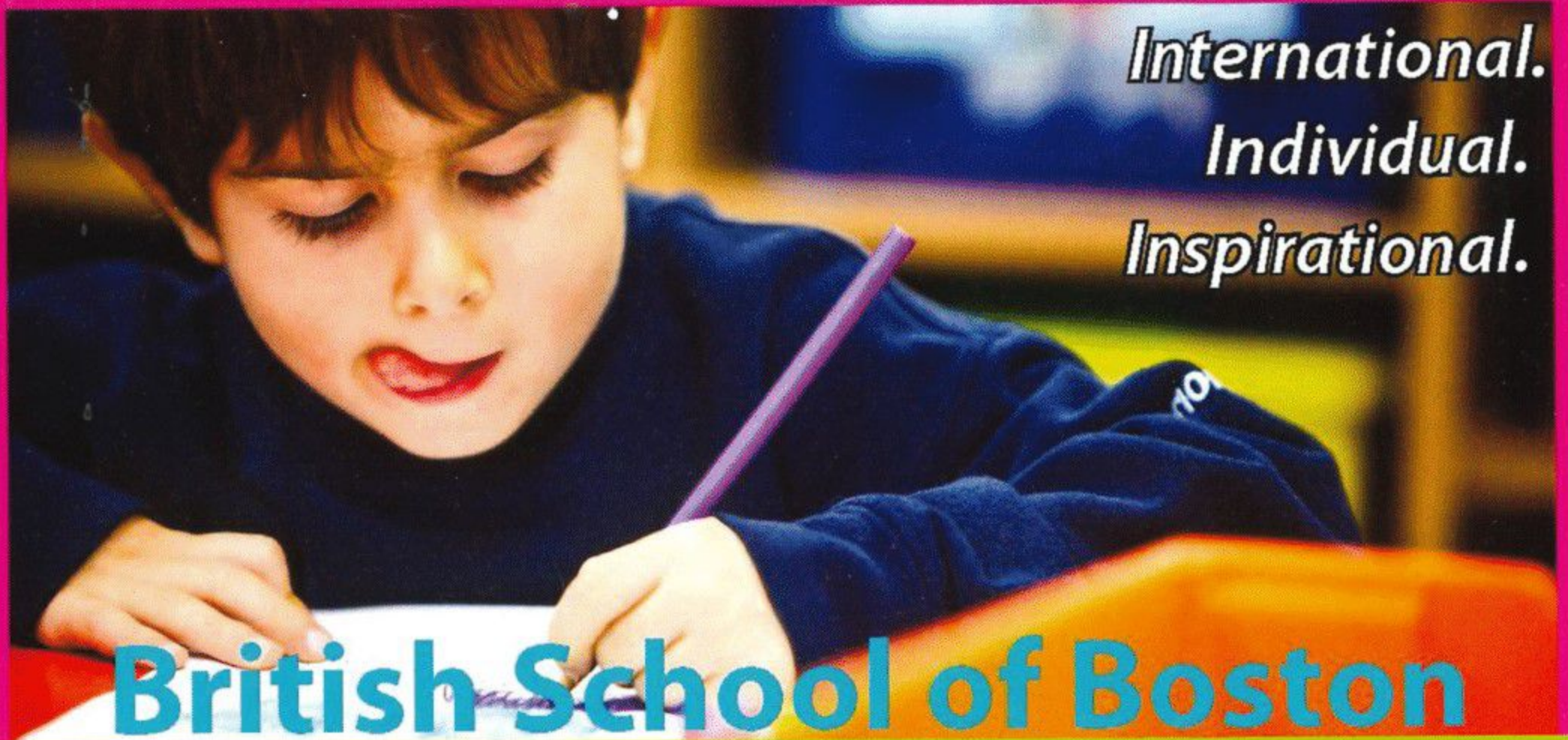
### CREWS, WORK/STUDY STUDENTS, AND INTERNS

Lauren Bird, Rachel Copans, Rachel Costello, Chance Davis, Sam Dunkley, Fantasia Fernandes, Erin Forgay, Hope Gagnon, Kendra Grant, Emily Hammerstrom, Megan Hughes, Emily Jestus, Linda Le, Rachel Leblanc, Colin Lee, Kaitlin "Magic" Mahon, Laura Morgan, Mone Neville, Lauren Ofshay, Megan Otteson, D.J. Piper, Jessica Romero, Nic Seyffert, Lindsey Snyder, Jessica Trester, Doris Vincent, Emily Woznick

### SPECIAL THANKS

Coburn Bennett; Jeffrey Scott Burrows, Chamber Theatre Productions; Shawn P. Cotter; Antoine Gagnon, High Output; Jeri Hammond for the study guide; Audree Hedequist; Sanjeev Joshi; James Karg; Andrew Katz; Joni Liberman; Alessandra Mondolfi; Colleen Mullaly; Mr. John's Cleaners; Eliu Olmo; Frank Romero and members of the Wheelock College Facilities staff; Nancy Viall Shoemaker; Patrick Snyder; Gilesa Thomas; Kimetra Thompson; WGBH; Jerry Wheelock; Arthur Wheelock-Wood; James Williston; Jodi Leduc Zemsky

*We wish to thank all the people who have joined with us since the program went to press.*



*International.  
Individual.  
Inspirational.*

## British School of Boston

Academically rigorous, internationally focused. Featuring the International Baccalaureate Diploma Programme. Serving Toddlers through High School students.

**Your child will love learning and achieve amazing results!  
Call now for a tour!**

High School Merit Scholarships Available  
Toddler Program from 18 months

617-522-2261

[www.britishschoolofboston.org](http://www.britishschoolofboston.org)

# RAVE REVIEWS

See why we were voted  
Best Parenting Publication  
in North America in  
2004, 2006, 2007, 2008,  
2010 and 2012.



To find a copy nearest you go to  
**[www.baystateparent.com](http://www.baystateparent.com)**

## Wheelock Family Theatre Advisory Board

WFT's Advisory Board is a group of dedicated individuals from broad and diverse segments of the community who provide support and expertise to WFT's staff and artists on an ongoing basis.

We are grateful for their insights and their enthusiasm.

**Carola Cadley, Co-Chair**

VP, Corporate Development and Marketing, Children's Hospital Trust, Boston

**Mindy d'Arbeloff, Co-Chair**

VP, New Business Development, fundraise.com, Boston

**Carole Charnow**

President and Chief Executive Officer, Boston Children's Museum

**Eleanor Chin**

Principal, Clarity Partners Coaching and Consulting, Jamaica Plain

**Linda Chin**

President, Asian Task Force Against Domestic Violence, Boston

**Jeff Coburn, Co-Chair Emeritus**

Managing Director, Coburn Consulting, Boston

**Ceronne B. Daly**

Director of Diversity Programs, Office of Human Resources, Boston Public Schools

**Rosario A. Dominguez**

Senior Training and Technical Assistance Associate, Head Start National Center on Program Management and Fiscal Operations, Education Development Center, Inc., Waltham

**Priscilla Fales**

Teacher, Beacon Hill Nursery School, Boston

**Ed Feather**

Group Account Director, The Boston Group, Boston

**Andrea Genser**

Executive Director, WE CAN Corporation, Harwich Port

**Nancy Gertner**

Professor of Practice, Harvard Law School, Cambridge

**Sandra Goldfarb**

Senior VP, Rasky Baerlein, Boston

**Lillian Gonzalez**

Principal, Gonzalez & Associates P.C., Stoughton

**Charles B. Gordon**

President, The New Kensington Group, North Reading

**Eric Hermanson**

Attorney, White & Williams LLP, Boston

**Steven M. Key, Esq.**

Attorney, Law Office of Steven M. Key, Boston

**Susan Kosoff**

Co-Founder, Wheelock Family Theatre

**Robin Mount, Co-Chair Emerita**

Director, Office of Career Services, Harvard University, Cambridge

**Brooke Sandford**

Parent Volunteer, Sudbury

**Meegan Turet**

Fine Arts Chair, Academy of the Pacific Rim Charter Public School, Hyde Park

## WFT Supporters

Since 1981 Wheelock Family Theatre has been bringing professional productions and educational programs to children and families from communities throughout the Boston area. We are committed to keeping the quality of our productions high and our ticket and tuition prices affordable. But ticket income covers only about two-thirds of our costs. For the rest, we rely on the support of those generous institutions and individuals who value our work and understand the contribution we make to the community. To make a tax-deductible contribution to Wheelock Family Theatre, please contact Kay Arden Elliott at 617.879.2252 or visit [www.wheelockfamilytheatre.org](http://www.wheelockfamilytheatre.org).

### Institutional Supporters

Actors' Equity Foundation  
Bank of America <sup>WH</sup>  
Boston Children's Hospital  
Boston Parents Paper  
Jane B. Cook Charitable Trust  
Marion L. Decrow Memorial Foundation  
Alice Willard Dorr Foundation  
Google  
Massachusetts Cultural Council  
The Parthenon Group <sup>WH</sup>  
Peabody Foundation  
Residence Inn Boston Back Bay-Fenway <sup>WH</sup>  
Sodexo  
Wheelock College  
Yawkey Foundation

### Individual Donors

#### Angels (\$1,000 and up)

Atlantic Philanthropies Director/Employee  
Designated Gift Fund  
Dr. Liliana Bordeianou and Eric B. Hermanson <sup>4TH WH</sup>  
The Brakeman Family <sup>WH</sup>  
Carola Cadley <sup>4TH WH</sup>  
Jeff Coburn <sup>WH</sup>  
Priscilla Fales <sup>4TH WH</sup>  
Barbara Elliott Fargo  
Lillian Gonzalez <sup>WH</sup>  
Susan Kosoff <sup>4TH WH</sup>  
Wendy Lement <sup>4TH WH</sup>  
The Mussafer Family <sup>WH</sup>  
Greg Nash <sup>4TH WH</sup>  
Brooke and Neal Sandford <sup>4TH WH</sup>  
Ellen H. Skove and Family  
Stephanie Spector  
Jane Staab <sup>4TH WH</sup>  
The Workman Family <sup>WH</sup>

#### Leading Players (\$500-\$999)

Sue Costello and Jeff Keffer <sup>WH</sup>  
Sarah and Richard deLima  
Kay Arden Elliott  
Elizabeth Ferry <sup>VIP WH</sup>  
Andrea Genser and Sue Landers <sup>4TH WH</sup>  
Charlotte Hemr <sup>WH</sup>  
Antonia and Joseph Nedder <sup>VIP WH</sup>  
The Norton Sheehans <sup>WH</sup>  
John Reinstein and Nancy Gertner <sup>EPP</sup>  
Susan Wong <sup>WH</sup>  
Sally and Richard Zeckhauser

### Supporting Players (\$100-\$499)

Anonymous (2)  
Joshua Abrams <sup>VIP</sup>  
Amy Almeida  
The Ashline/Gates Family  
Janet Bailey  
Maria Barry  
Angela and Christopher Bauer  
Margaret Bergstrand  
Mindy Berman and Family  
Alan and Debbie Bieri  
Gay Bird  
Danny Bolton <sup>4TH</sup>  
Debra Borkovitz  
Amy Branger and Andrew Klein <sup>VIP</sup>  
Miriam Braude <sup>VIP WH</sup>  
Susan Breed <sup>WH</sup>  
Monique and Greg Brown <sup>VIP</sup>  
Jennifer Canlas <sup>WH</sup>  
Leann Canty <sup>WH</sup>  
Darcy Carr <sup>WH</sup>  
Chamber Theatre Productions  
Carole Charnow <sup>WH</sup>  
Susan Chrystal  
Michele Clark and Ziyad Hopkins <sup>VIP</sup>  
Ellen Colton  
Chris and Zu Cowperthwaite <sup>VIP</sup>  
Bob Crabtree and Prill Ellis  
Tina and Harvey Crosby  
Amanda Cunningham  
Susan Daley <sup>VIP WH</sup>  
John Davin  
Martha Davis <sup>VIP</sup>  
Dean K. Denniston, Jr.  
David DeSteno <sup>WH</sup>  
Andrea E. Doane <sup>WH</sup>  
Bob Doane  
The Doherty Family <sup>WH</sup>  
Zelinda and John Douhan  
Mary Lee and Buzz Dunn  
Natalie Eldridge and Libba Ingram <sup>4TH WH</sup>  
Elizabeth Ferry <sup>VIP WH</sup>  
Marcia McClintock Folsom  
Bobbi Fox  
Emily Friedman  
Meryl Galaid  
Susan Gochenour and Steven Rosen  
Leslie E. and Charles B. Gordon  
Mary Beth and Chris Gordon  
Shelly Greenfield and Allan Brandt  
Donna Griffith  
Rena Gyftopoulos  
Satoko Kishi Hesp <sup>WH</sup>  
Anne and Jim Howard

Chobee Hoy  
Hannah Intille  
Debby Keefe  
Sally Kindleberger  
Stephen Kraffmiller <sup>VIP</sup>  
Meenakshi Kumar <sup>VIP WH</sup>  
Stacey and David Lee  
Sara Levine *imo* Joeritta Jones de Almeida  
Nicky and Paige L'Hommedieu <sup>4TH</sup>  
Rosamond Lu-Bao <sup>WH</sup>  
Meredith MacNeill <sup>WH</sup>  
Ulla C. Malkus  
The Manasse-Latham Family <sup>VIP 4TH</sup>  
Mary and Mike McConnell  
Carol and David Mersky  
Mark Minton <sup>VIP</sup>  
Laura Morrison and Richard Pels  
Grace Napier and William Monnen <sup>4TH</sup>  
Pat O'Brian <sup>WH</sup>  
Lisa Johnson Ogrinc <sup>4TH</sup>  
Laura Parkin <sup>VIP WH</sup>  
Charlotte and Ed Peed  
Mary ElizaBeth Peters <sup>4TH</sup>  
Adelaide M. Queeney <sup>WH</sup>  
Joe Ranft <sup>WH</sup>  
Susan Ryan  
David Salant  
Lisa and Roy Schifilliti <sup>VIP</sup>  
Betty and Herman Scott  
Maggie Seelig  
Ruthann Sneider  
Judy Spiridigliozzi  
Mr. and Mrs. George R. Sprague  
Bonnie St. Germain  
Janet and Dr. O. Robert Stevens <sup>VIP 4TH WH</sup>  
Martha E. Stone  
Dorothy Stoneman  
Karen and Hale Sturges  
Leslie Sullivan <sup>VIP WH</sup>  
Nancy Tang <sup>WH</sup>  
Carolyn Thall <sup>WH</sup>  
Thu-Hang Tran and Mark S. Day  
Elise and Woody Tucker  
Joan Watts  
Susan Weir <sup>4TH</sup>  
Jack Welch  
Penelope Wells  
Jerry Wheelock <sup>VIP</sup>  
Claire White  
Donna White  
Martha and Jeff Winokur <sup>4TH</sup>  
Marshall Wolf

<sup>VIP</sup> Very Important Parent – of a child who has appeared in a recent WFT production

<sup>4TH</sup> Fourth Decade Supporter

<sup>WH</sup> 2014 WHEEL Award

<sup>EPP</sup> Emerging Playwrights Program Supporter

List reflects gifts and pledges made between 7/1/13 and 4/3/14.



Tickets and Subscriptions	617.879.2300
Classes	617.879.2252
Casting	617.879.2235
Donations	617.879.2252
Volunteer Opportunities	617.879.2147
Theatre Espresso	617.879.2148

<a href="mailto:tickets@wheelock.edu">tickets@wheelock.edu</a>
<a href="mailto:jbay@wheelock.edu">jbay@wheelock.edu</a>
<a href="mailto:jstaab@wheelock.edu">jstaab@wheelock.edu</a>
<a href="mailto:kelliott@wheelock.edu">kelliott@wheelock.edu</a>
<a href="mailto:cbaldwin@wheelock.edu">cbaldwin@wheelock.edu</a>
<a href="mailto:sbolman@wheelock.edu">sbolman@wheelock.edu</a>

**Mail:** 200 The Riverway, Boston, MA 02215-4176

**Web:** [www.wheelockfamilytheatre.org](http://www.wheelockfamilytheatre.org)

## The Fourth Decade

Our ability to sustain our record of excellence and access depends on the individuals and families who believe in our mission and provide continuing support. The Fourth Decade program, launched at the time of our 30th anniversary in 2011, is an opportunity for generous and devoted supporters to contribute to our long-term sustainability with three-year commitments of support. More than 40 patrons have joined the Fourth Decade group, investing longer term in the people and infrastructure we need to provide more and even better experiences for children and families in the future.

For information about becoming a Wheelock Family Theatre Fourth Decade patron, please contact Kay Arden Elliott at 617.879.2252 or visit [www.wheelockfamilytheatre.org](http://www.wheelockfamilytheatre.org).

### WFT extends deep appreciation to the following members of the Wheelock College community for their support:

President Jackie Jenkins-Scott; Stephen Dill, Marketing Manager; Michael Fesko, Director of Campus Services; Joan V. Gallos, VP for Academic Affairs; Marjorie Hall, Chair of Arts; Adrian K. Haugabrook, VP for Student Success and Engagement; Ed Jacques, Director of Facilities; Anne Marie Martorana, VP and Chief Financial Officer; Jennifer Rice, VP for Development and Alumni Affairs; Marta T. Rosa, Special Assistant to the President for Government & External Affairs, and Strategic Partnership; and Roy Schifilliti, VP for Administration, Institutional Effectiveness, & Innovation.

WHO's WHO (continued from page 9)

**Siena Stanten (Monkey)**, a 3rd grader and competitive gymnast, has been featured in many TV ads for Hasbro since she was 4 years old. She currently is also appearing as Charlie in *Willy Wonka Jr.* at the Performing Arts Connection. Siena is excited to be making her WFT debut.

**David Sullivan (Front of Buffalo/Small Cousin)** is excited to be back on stage at WFT! Recent roles include Tommy Mara in *Miracle on 34th Street* (Stoneham), Lewis in *Pippin* (BCT), and an Orphan in *Oliver!* (WFT). He also recently filmed 3 industrial commercials for Houghton Mifflin Harcourt. David is in the 4th grade at the Advent School. He loves to play soccer, sing, play piano, and conquer difficult math equations. He thanks his grandparents for being his #1 fans.

**Julia Talbot (Hawthorn Berry Vendor)**, 14, is a student at the ACERA School in Winchester. This is her 5th production with WFT. Last season, she was seen on the WFT stage as Mr. Nilsson's puppeteer in *Pippi Longstocking*. Behind the scenes, Julia works on props and hangs out with the crew of the costume shop. She hopes you enjoy the show.

**Aidan Thielman (Monkey)** is a 3rd grader at Brackett Elementary in Arlington. He loves taking classes at WFT and is excited to be making his debut on the main stage here. Aidan also enjoys reading, playing violin, and entertaining his cat Binky.

**Talia Raisner Thompson (Monkey)** is excited about this chance to be the next-best-thing to a real monkey. She is in the 3rd grade at Pierce School in Brookline, where she recently performed in the chorus of *The Wizard of Oz*. Talia thanks Danny Bolton for inspiring her to audition for this show and Mrs. Barnum for letting her miss class.

**Mia A. Toro (Monkey)** is excited about her WFT main stage debut, having taken classes here since the age of 5. A 3rd grader at Pine Glen in Burlington, she enjoys theatre, singing, and dancing. Mia thanks her parents for chauffeuring her to rehearsals, and Jane Staab for this fabulous opportunity!

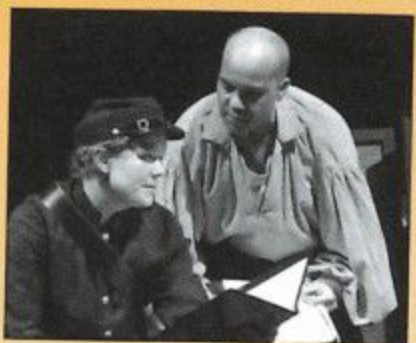
(continued on page 16)

**TheatreEspresso**  
WAKE UP TO HISTORY!

In Residence at Wheelock Family Theatre!



Theatre Espresso uses interactive theatre to teach young people to think critically and to promote civic dialogue. Our historical dramas empower students to explore the parallels between historical events and contemporary issues. By putting students in role as Supreme Court Justices, state senators, or members of a jury, we invite them to question the characters and debate issues raised by our plays. We practice non-traditional casting in terms of race and gender to reflect our diverse audiences. We tour the following plays to schools, museums, and courthouses:



- *Uprising on King Street: The Boston Massacre*
- *The Trial of Anthony Burns*
- *American Tapestry: Immigrant Children of the Bread and Roses Strike*
- *Justice at War: The Story of the Japanese Internment Camps*
- *The Nine Who Dared: Crisis at Little Rock*
- *Secret Soldiers: Women Who Fought in the Civil War*

To bring one of our programs to your school or to learn more: contact Shelley Bolman, *Managing Director*, at 617.879.2148 or [sbolman@wheelock.edu](mailto:sbolman@wheelock.edu), or visit our website at [www.TheatreEspresso.org](http://www.TheatreEspresso.org)



WHO's WHO (continued from page 15)

**Alana Tow** (*Small Cousin/Front of Buffalo*) is delighted to be making her WFT debut and performing again with her sister and her dad. She has been in *The King and I* and *The Wizard of Oz* (NSMT), *Annie* (Needham), and shows at Curtain Call and Metrowest. Alana also appears in the short film *Daddy's Little Girl* and a national Dunkin' Donuts commercial.

**Michael Tow (Ba)** is a Certified Financial Planner by day and a theatre and SAG actor by night. Favorite theatre credits include *Chinglish* (Lyric Stage), *Wild Swans* (ART), and *After the Quake* and *You for Me for You* (Company One). He has appeared opposite Ryan Reynolds in Universal's *RIPD* and Jason Isaacs in Showtime's *Brotherhood*. Two of his films, *Wander My Friends* and *The Cocks of the Walk*, are being released later this year. Michael will also be the lead in the much-anticipated Asian American feature comedy, *East of Hollywood*, shooting this summer. He is thrilled to be working with his daughters Alana and Mikayla again and would like to thank his wife Nancy and their youngest daughter Sienna for their support.

**Mikayla Tow (Monkey)**, a 2nd grader at the Newman School in Needham is excited to be performing again with her sister and Dad. Credits include the Little Girl understudy in *The Jungle Book* (Huntington) and *The King and I* and *The Wizard of Oz* (NSMT). Mikayla also enjoys singing and spending time with her family.

**Kaitee Tredway** (*Yellow/Painter's Apprentice/Ancessor Aunt/Cabbage Vendor*) is thrilled to return to WFT after appearing as Josie Pye in *Anne of Green Gables* last fall. She most recently swashbuckled as Antionette/Duke in *The Haberdasher: A Tale of Derring-do!* (Argos). Other credits include: *Brewed* (HMT), *She Kills Monsters* (Company One), and *99% Stone* (Theatre Offensive). Look for her later this summer in *Astroboy and the God of Comics* (Company One.) She also puppet wrangled for Lyric Stage's award-winning production of *Avenue Q*. In her spare time, she can be found making puppets and puppet costumes for Little's Creatures and other puppeteers. Kaitee holds a BA in Drama and Literature from Bennington. Oh! And she's a bona fide tap dancer too.

**Darren Trotman, Jr. (Monkey)**, a Hennigan School student, is grateful for this wonderful opportunity! He has performed in many productions at his church Full Life Gospel Center. Thanks to his mother, father, brother Nathaniel, family, and friends for their love, support, and encouragement.

**Kailey Tse-Harlow** (*Soldier Ling/Back of Buffalo*) is a junior at Quincy Upper School, where she is a member of the Advisory Student Council and Drama Club. Credits include Fata Morgana in *The Love of Three Oranges*, as well as Lyric Stage's *Coriolanus* and *As Thousands Cheer*. She looks forward to participating in NYU's Tisch Film Program this summer! Thanks to Ms. Demarco, Mr. Seavey, and Liz Hayes for inspiring her to get into the art of acting—their support and generosity mean the world to her—and to her family for their support from the very beginning.

**Alexa Wang** (*King's Page, Ancessor Child, Translator for Servant Wang*) is homeschooled, which gives her time to pursue activities such as ballet, tap, jazz dance, improv theatre, chorus, circus arts, and cross-country skiing. She would like to express her gratitude for her parents and for dead-end streets.

**Arthur Wheelock-Wood** (*Da-Fu*) recently appeared as the Ice Cream Seller in *Brundibar* (Central Square). His credits here include an Orphan in *Oliver!* and a Munchkin in *The Wizard of Oz*. Arthur takes classes at WFT, Riverside, South Shore School of Theatre, and Puppet Showplace; he is also learning to play the drums. He enjoys singing and drawing, as well as making puppets and marionettes, creating stages for them, and putting on shows. Arthur is a 6th grader at Saint Mary in Brookline.

**Sebastian Wood** (*Buffalo Boy*) is so excited to return to WFT, having had a marvelous time playing Bifur in last fall's production of *The Hobbit*. He has also appeared in *Bye Bye Birdie*, *Beauty and the Beast*, and *Fiddler on the Roof* (Pierce School); *Alexander and the...Very Bad Day* (BCT), *Merrily We Roll Along* (Boston Conservatory); and *Fool of the World* (Artbarn). Sebastian is in 8th grade at Pierce School in Brookline.

**Caroline Workman** (*Minli*) is a 14-year-old 8th grader who loves to dance, act, and sing. She started performing at age 4, in local productions with North Cambridge Family Opera and Deborah Mason School of Dance. She has trained in ballet, jazz, tap, modern, and hip-hop for 10 years and is a senior member of Cambridge Youth Dance company. She made her professional debut as Maisie in WFT's *Annie*, and has since appeared here in *The Wizard of Oz* (Coroner Munchkin) and *Oliver!* (Bet). On Broadway, Caroline appeared in over 100 performances of the musical *Billy Elliot* in 8 different roles. She has received valuable training (and has had lots of fun!) in several of WFT's education programs; she believes that it is important to keep learning and practicing. Caroline is excited to be involved in a play that connects her more closely to her Chinese heritage, and she is thrilled to be part of such a large and diverse cast. Jane Staab is one of her favorite actor-directors, Grace Lin one of her favorite author-illustrators, and Minli one of her favorite fictional characters. Like Minli (spoiler alert!), Caroline understands that reaching a destination can be impossible without the help of others. She is incredibly grateful to the teachers, mentors, friends, and family who believe in her and support her in doing what she loves. For Caroline, good fortune = being part of the WFT family. Proud member of Actors' Equity Association.

**Christina Xiao** (*Cub Lion*) is happy to return to WFT for her 6th production; recent credits here include *The Hobbit* and *The Wizard of Oz*. Other credits include Boston Ballet's *Nutcracker*. Christina is first violinist with the Boston Youth Symphony Orchestra, and she has composed classical music and won international contests. An 11-year-old 5th grader, she has been acting since the age of 6 and she likes it very much! Thanks to her parents, Jane, and everyone for helping her.

**Craig A. Zemsky** (*Lighting Designer*) is excited to have the opportunity to design and work with the amazing people at WFT. He holds an MFA from Ohio U and a BA from the U of Denver, and he has performed in every state in the continental US. During his time at the Barter in Abingdon, VA, Craig designed some of his favorite shows and met his lovely wife Jodi. He has also worked with Chamber, Kennedy Center Theatre for Young Audiences, and Windwood. Design credits include *Tartuffe* (DU), *Les Trois Dumas* (OU), and *Man of Constant Sorrow: The Story of Ralph and Carter Stanley* (Barter). He is credited as the original lighting designer for Barter's *Wise Women* and *Man of Constant Sorrow*. Craig dedicates this show to his wife and son, and thanks them for all their love and support.



## Wheelock Family Theatre Education Program

**SUMMER CLASSES  
START JUNE 26**

View complete class listings  
and register online at

**WheelockFamilyTheatre.org**

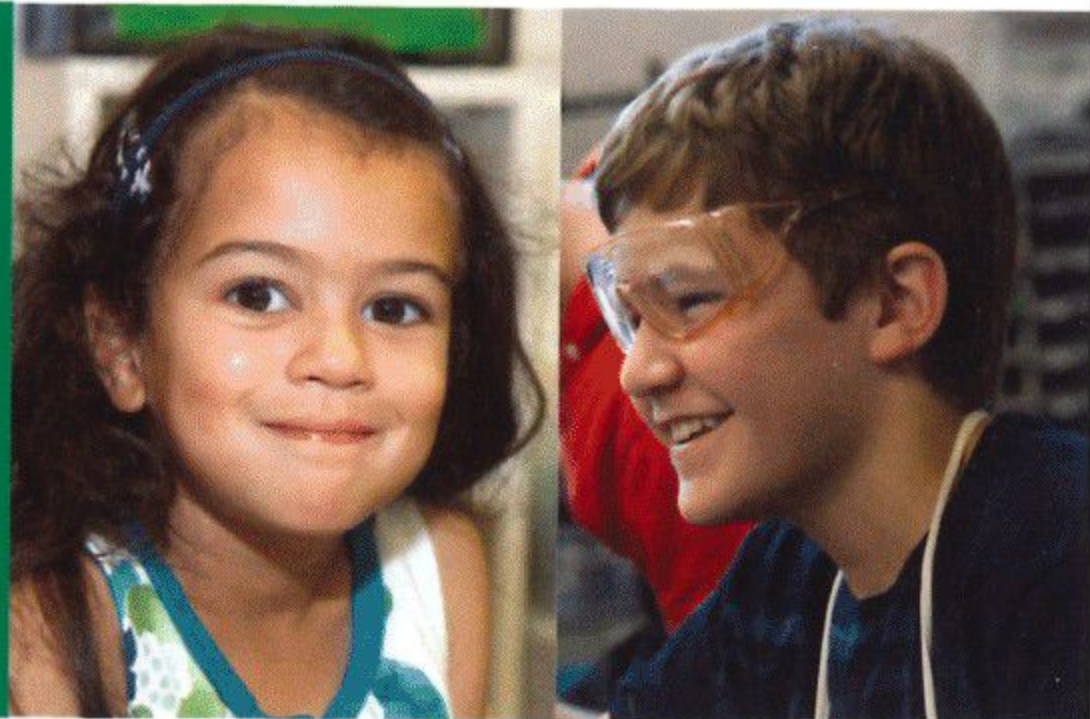
For more info:

kelliott@wheelock.edu • 617.879.2252



# Joy, Growth, Success

DISCOVER THE ONLY SCHOOL  
IN NEW ENGLAND  
CITED AS A "MODEL SCHOOL"  
FOR 21ST CENTURY LEARNING BY  
THE NATIONAL ASSOCIATION  
OF INDEPENDENT SCHOOLS.



## Brimmer and May

Coeducational independent day school. Pre-K-12

69 Middlesex Road Chestnut Hill, MA  
617-738-8695 [www.brimmerandmay.org](http://www.brimmerandmay.org)



— Mention —  
**WHEELOCK**  
to receive  
**\$25 off**  
your first tutoring package.



## BOSTON TUTORING SERVICES

### A Personalized Approach to Education

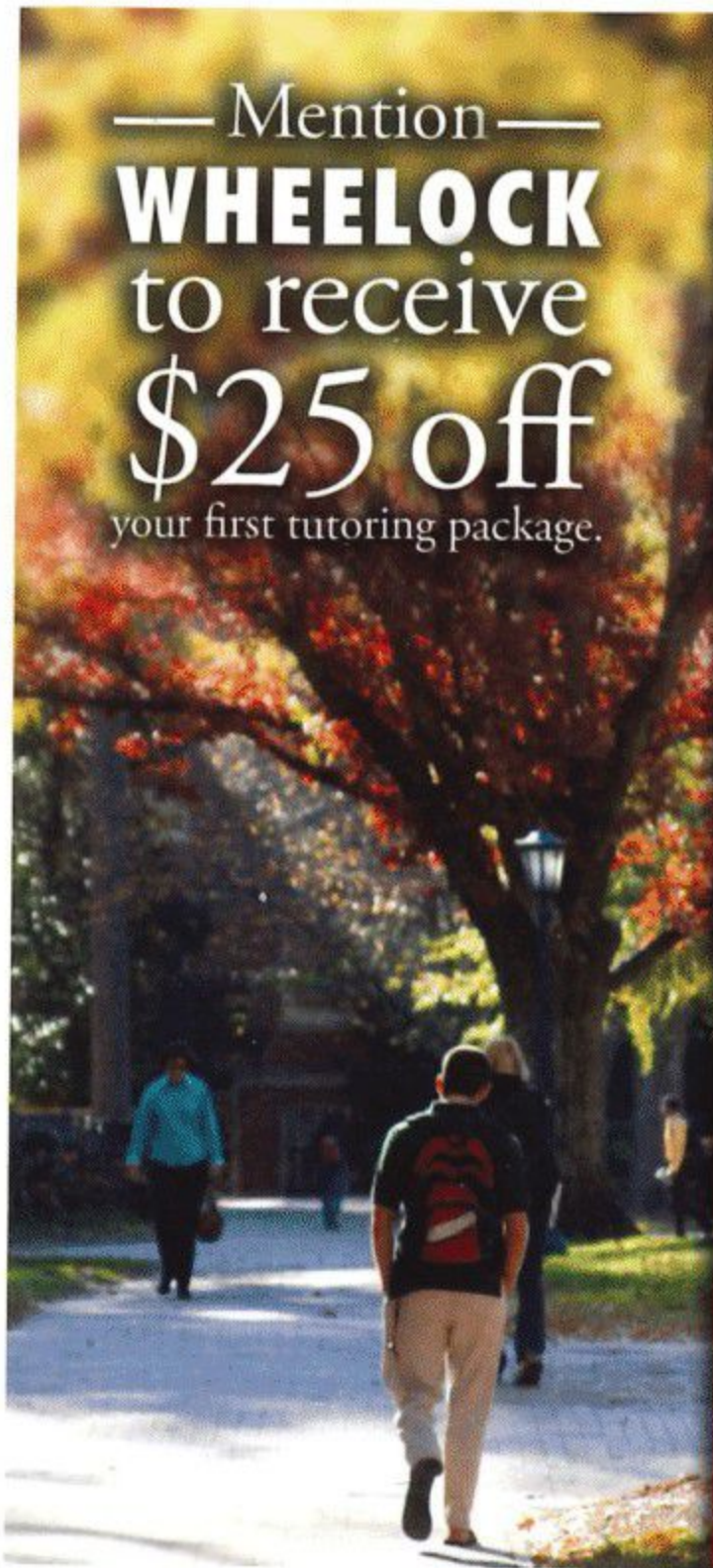
**One-on-One  
In-Home  
Tutoring**

- ✓ ISEE and SSAT Test Prep
- ✓ SAT and ACT Test Prep
- ✓ K-12 Academic Subject Tutoring
- ✓ Admission Consulting

**CALL US TODAY**

781-248-4558

[BostonTutoringServices.com](http://BostonTutoringServices.com)  
[Info@BostonTutoringServices.com](mailto:Info@BostonTutoringServices.com)



*Discover dance this summer*



Experience all that Boston Ballet School has to offer this summer in a wide range of programs for children ages 3-16 • Beginners Welcome

*Explore dance, have fun, make new friends!*

**Enroll today — call 617.456.6333**

**BOSTON BALLET SCHOOL**

BOSTON

[www.bostonballet.org/school](http://www.bostonballet.org/school)

Photos by Liza Voll and Igor Burlak

# Boston Parents PAPER™



*Wishing  
Wheelock  
Family  
Theatre  
another  
successful  
year!*

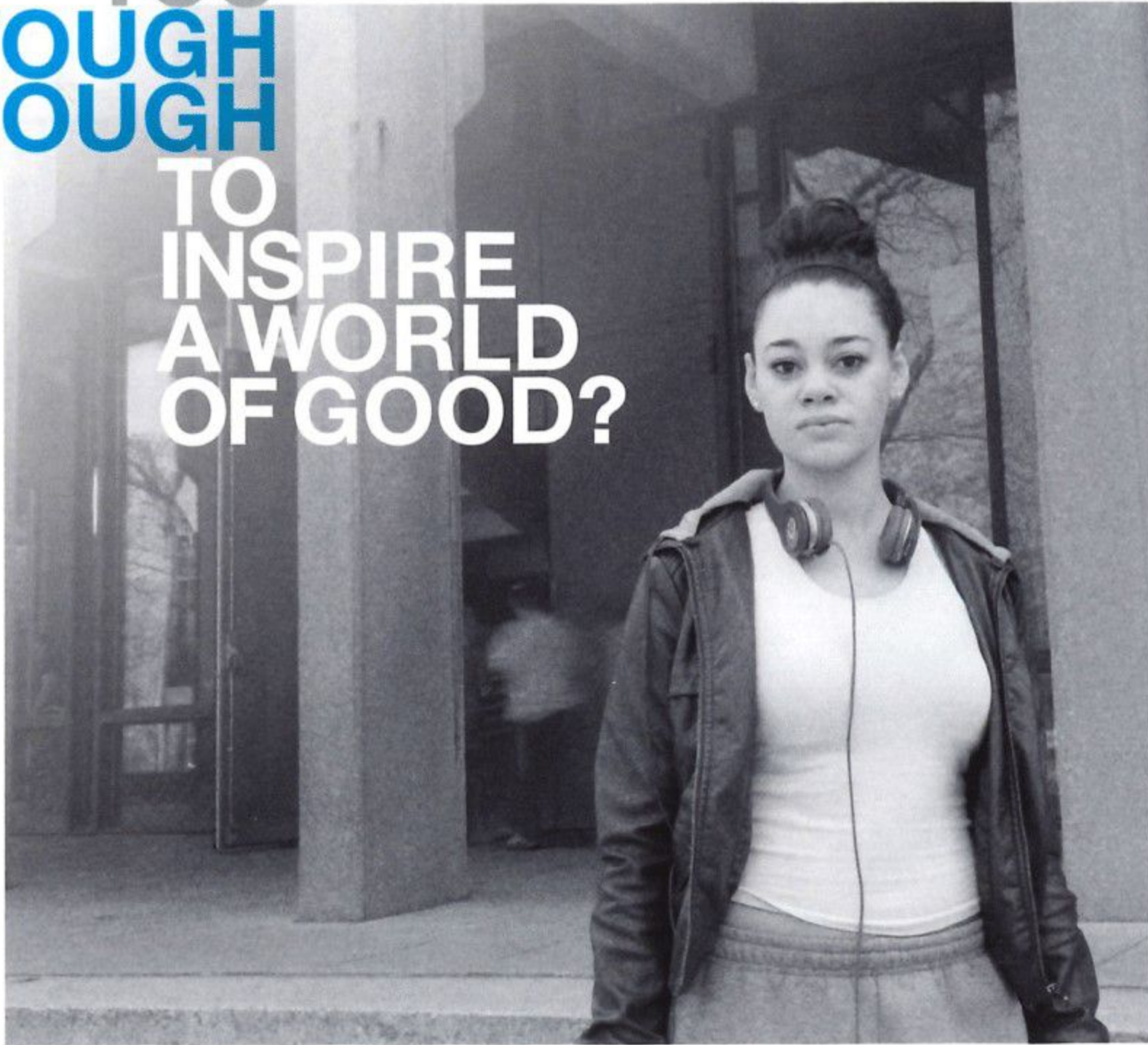
Pick up the monthly magazine and visit us online at [BostonParentsPaper.com](http://BostonParentsPaper.com)

Sign up to win great weekly prizes, like us on Facebook and follow us on Twitter and Pinterest.



**ENJOY THE SHOW!**

ARE  
YOU  
**TOUGH  
ENOUGH**  
TO  
INSPIRE  
A WORLD  
OF GOOD?



At Wheelock, our mission is to improve the lives of children and families. Everything we do, from academic programs to community service and partnerships to advocacy has our mission at its core. It's not easy. Just worth it. Are you tough enough to inspire a world of Good?

Learn more at [wheelock.edu/toughenough](http://wheelock.edu/toughenough)

---

inspire a world of good | WHEELOCK  
COLLEGE